

# **Welcome to the New York Tech-Security Conference**



JCS & Associates, Inc. (JCS) was founded in 1991 as an I/T Security Sales and Marketing Company specializing in Endpoint Security Solutions.

JCS was McAfee's leading VAR in 1992 in NA and 1993 worldwide.

JCS began reselling Reflex Disknet Pro in 1995, and was named the exclusive North American Distributor by Reflex in 2002.

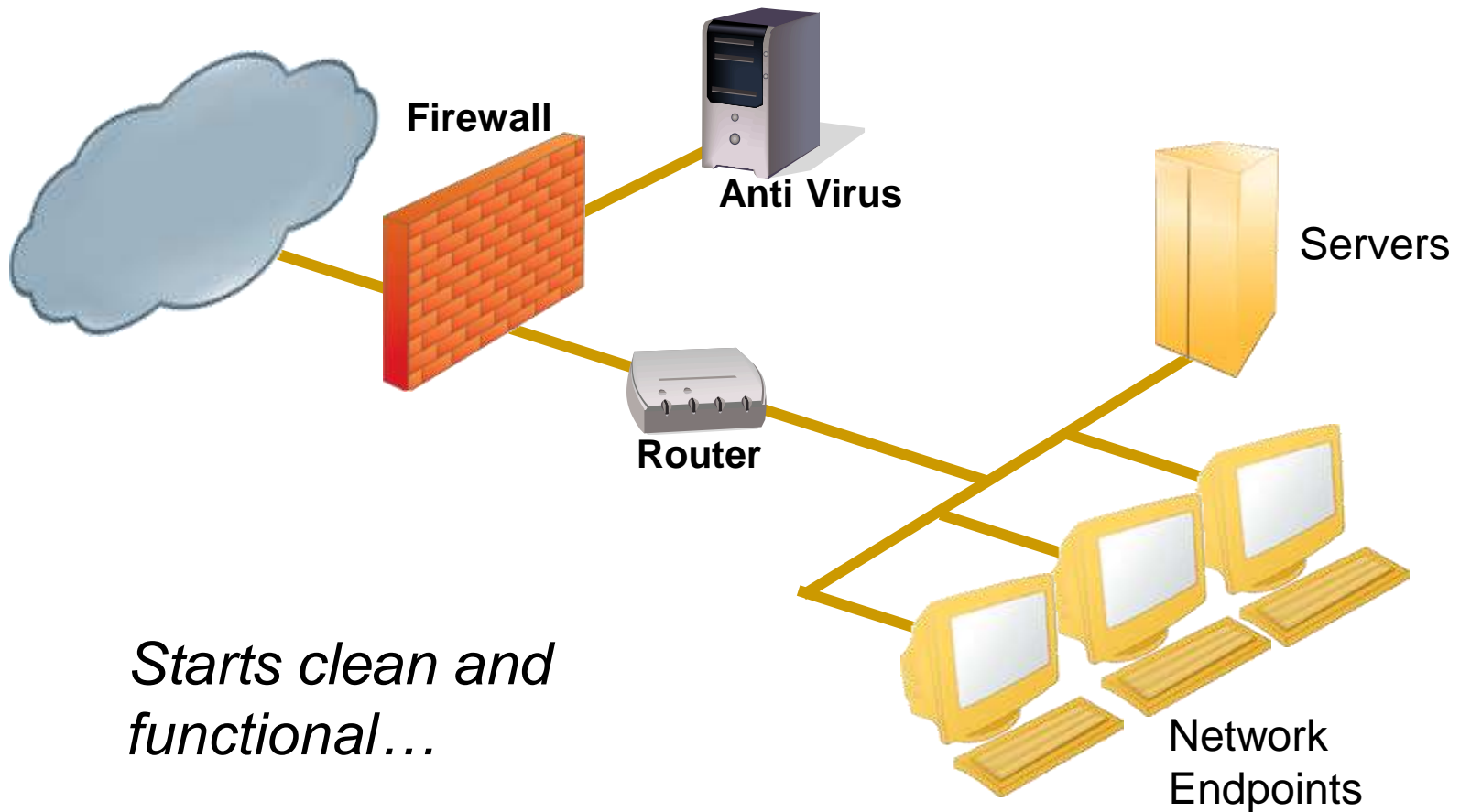
Reflex Magnetics was acquired by Pointsec in November of 2006. Pointsec was acquired by Check Point in February of 2007, and JCS was named "Check Point Endpoint Security Partner of the Year" for 2007 in March of 2008.

JCS currently has customers in every state and province in North America and offices located in Ann Arbor and Grand Rapids, MI, Minneapolis, MN, Sioux Falls, SD, Boulder, CO, Boston, MA and Ottawa, Canada.

JCS has sold, installed and integrated more desktops with end-point security solutions than any other individual VAR in North America.

JCS' expertise helps customers accelerate the evaluation, proof of concept, executive buy-in cycle and installation for agent and non-agent based end-point security solutions.

A typical corporate network is deployed clean and functional and is designed to enable users to perform their day-to-day job tasks in a secure, compliant and productive manner to fulfill the company's business objectives.

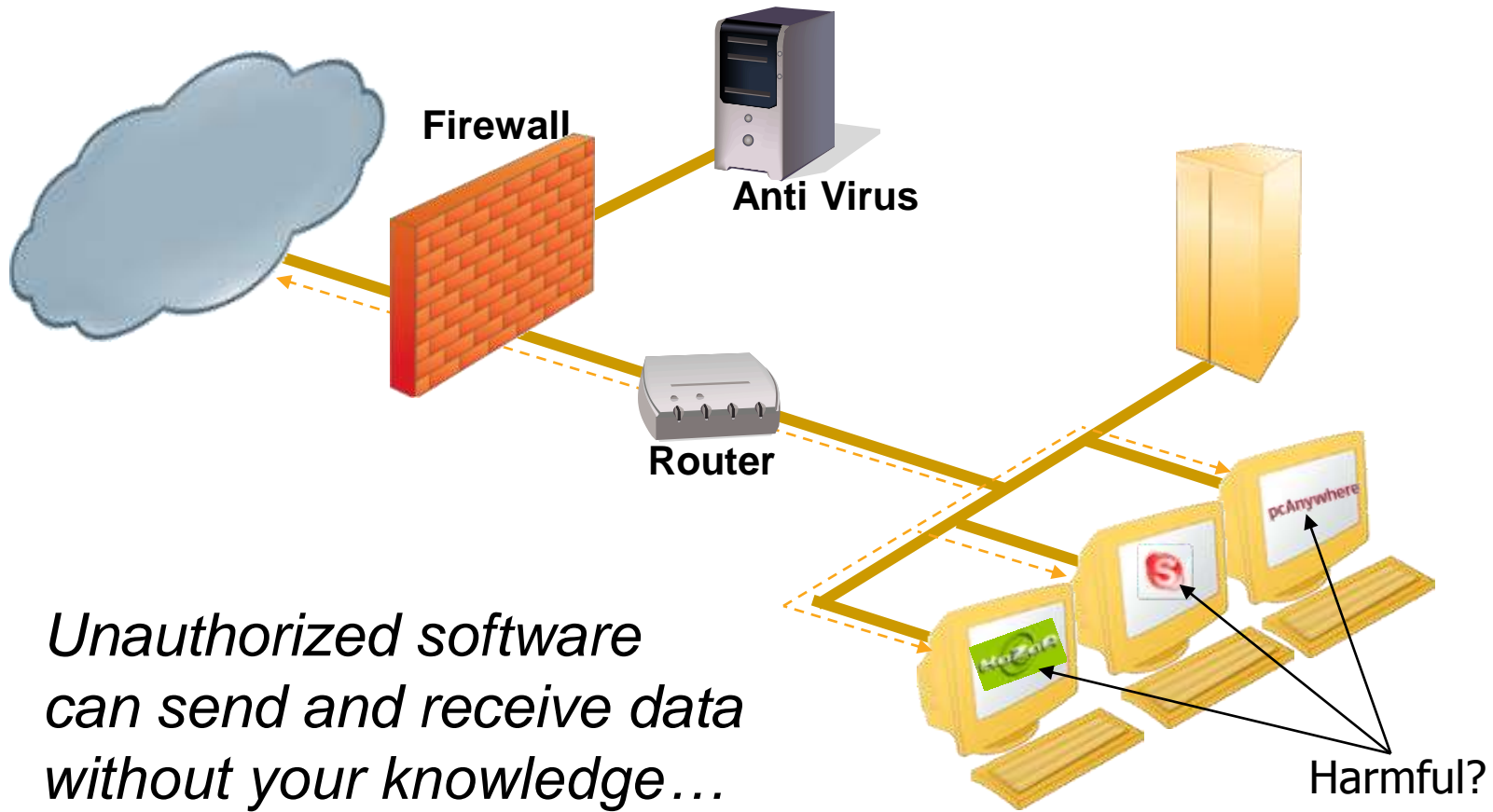


*Starts clean and functional...*

In time, through normal network usage, quality degrades from on-line activity, errors, software & file downloads, bandwidth contention, communications and Web use.

These activities may or may not be part of normal operations...

*But can you even identify them?*



*Unauthorized software  
can send and receive data  
without your knowledge...*

Now, add into the mix all the quality-killing variables from other sources.

Examples:

- mobile device acting as a modem
- a rogue wireless access point
- wireless PDA transmission
- USB removable storage devices

*Do have any idea where, how or why your IT resources are being used???*



## So...what can you do?

- How do you verify the quality of network systems, controls, policies and business use in a simple and cost effective manner?
- How do you manage IT quality and security policy on every endpoint without installing client or agent software?

Does your organization have a policy addressing:

- Peer to Peer networking across the internet
- Web Sharing (sendthisfile.com)
- IM (Instant Messaging) like AIM, Skype MSN
- Casual Personal Web use (what % of an employee's work day)
- Inappropriate content (hate mail porn obscene text)
- File & Software Downloading (exe or unrestricted)
- Internet Radio
- Personal email, personal email for sending corporate information or communications
- Windows Updates (optional or mandated)
- Bandwidth utilization (business vs. personal usage)

If your organization has a policy, what processes do you use to verify:

Peer to Peer networking across the internet

Web Sharing (sendthisfile.com)

IM (Instant Messaging) like AIM, Skype MSN

Casual Personal Web use (what % of an employee's work day)

Inappropriate content (hate mail porn obscene text)

File & Software Downloading (exe or unrestricted)

Internet Radio

Personal email, personal email for sending corporate information or communications

Windows Updates (optional or mandated)

Bandwidth utilization (business vs. personal usage)

Envision the data in your network as if it were a functional airport.

There are planes in the air (data on the wire) and planes on the ground (data at rest) that you need to be concerned with.

Air Traffic Controllers watch the planes in the air, and the Ground Traffic Controllers watch the planes on the ground.

# Watching the 'Planes In The Air'

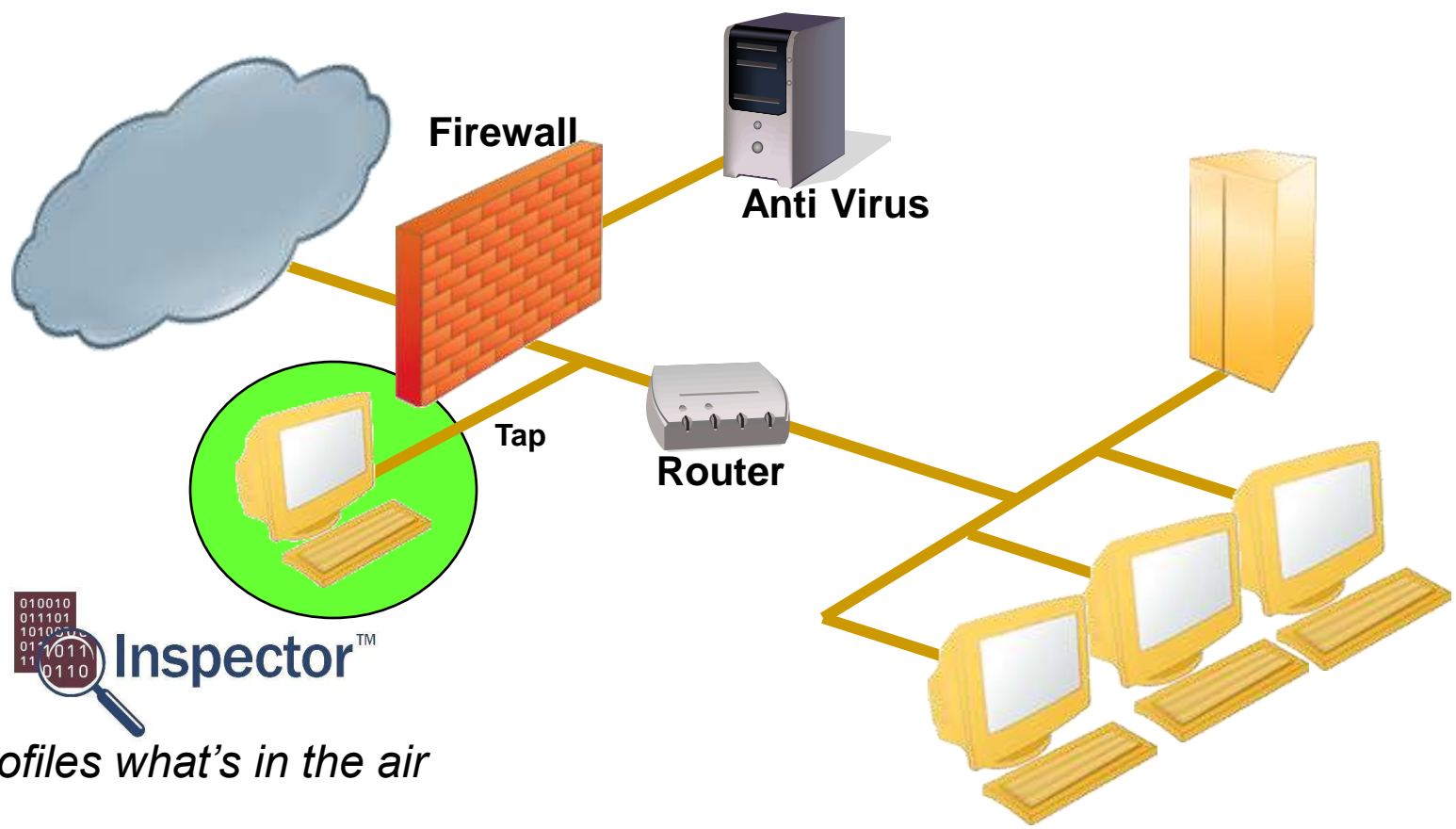


*Congruity Inspector™*

Comprehensive

Network Quality Assurance

Solution



*Profiles what's in the air*



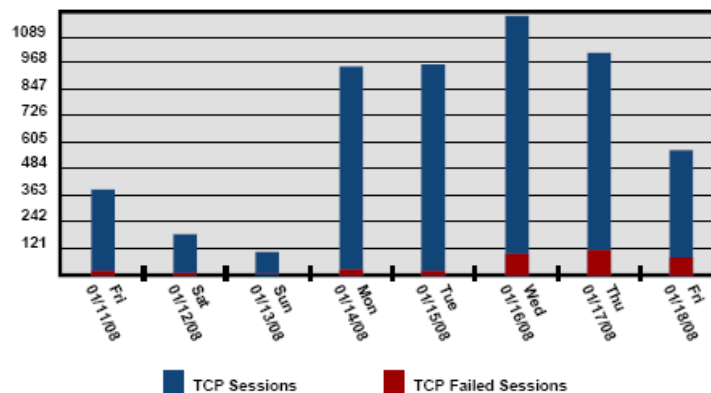
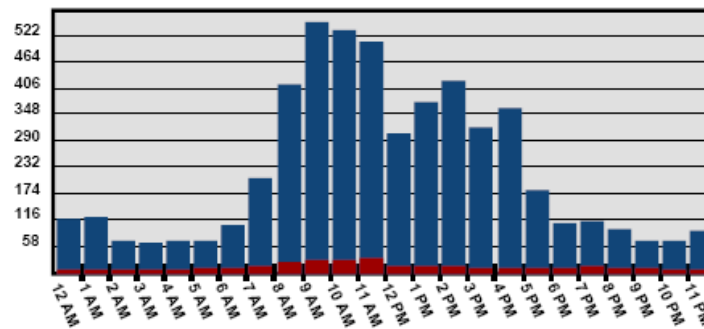
# Inspector™

# JCS & Associates, Inc.

## Congruity Inspector™

- Easy, single PC install provides network-wide IT status, non-disruptive
- Automatic, network-level data source eliminates manual device log collection, reporting and review
- Consistent, unbiased NQA
- I/T best practice status verification for: Firewall, IDS, Hosts, Email, and Web policy compliance and technology usage
- 24 x 7 cycle depicts operational trends and relationships so you can easily verify QA standards and quickly identify the source of issues allowing you to prioritize actions

SMTP Access Times



### Email System Usage Trends



# Congruity Inspector™

- Improves IT Management, budgeting & planning
- Easy, consistent results
- Automation reduces costs
- One-click compliance reports
- Improves productivity
- Improves audit preparation
- Improves outside audit results
- Zero FTE requirements
- Improves communications with upper management

**Internet-Exposed TCP/IP Services** 6/22/2007 - 6/29/2007

This summary represents the **inbound network security policy**.

Top:  **TCP** **UDP**

Service	Port	ID	TCP/IP		Bytes	
			Sessions	Failed	Inbound	Outbound
smtp	25	EMAIL	13201	0	762.11 MB	31.00 MB
ms-sql-s	1433		14218	0	193.39 MB	154.16 MB
vytalvaultbrtp	2546		12	0	134.15 MB	3.82 MB
dmdocbroker	1489	FTP_data	1	0	35.36 MB	34.34 MB
t128-gateway	1627	FTP_data	1	0	35.18 MB	34.17 MB
sdsc-lm	1537	FTP_data	1	0	34.94 MB	33.95 MB
https	443	SSLv3	1942	2	30.55 MB	24.07 MB
	3202		469	0	22.91 MB	21.08 MB
	3204		466	0	22.13 MB	20.33 MB
	3203		472	0	21.26 MB	19.44 MB
	3561	FTP_data	1	0	7.95 MB	7.78 MB
	3571	FTP_data	1	0	7.90 MB	7.73 MB
cnap	1637	FTP_data	2	0	4.27 MB	4.14 MB
laplink	1547	FTP_data	1	0	4.18 MB	4.06 MB
netmap_lm	1493	FTP_data	1	0	4.16 MB	4.04 MB
docstor	1488	FTP_data	1	0	3.79 MB	3.68 MB
ampr-inter	1536	FTP_data	1	0	3.51 MB	3.41 MB
shockwave	1626	FTP_data	2	0	2.90 MB	2.82 MB
https	443		181	0	1.06 MB	863.23 KB
http	80	HTTP	784	0	828.90 KB	390.21 KB



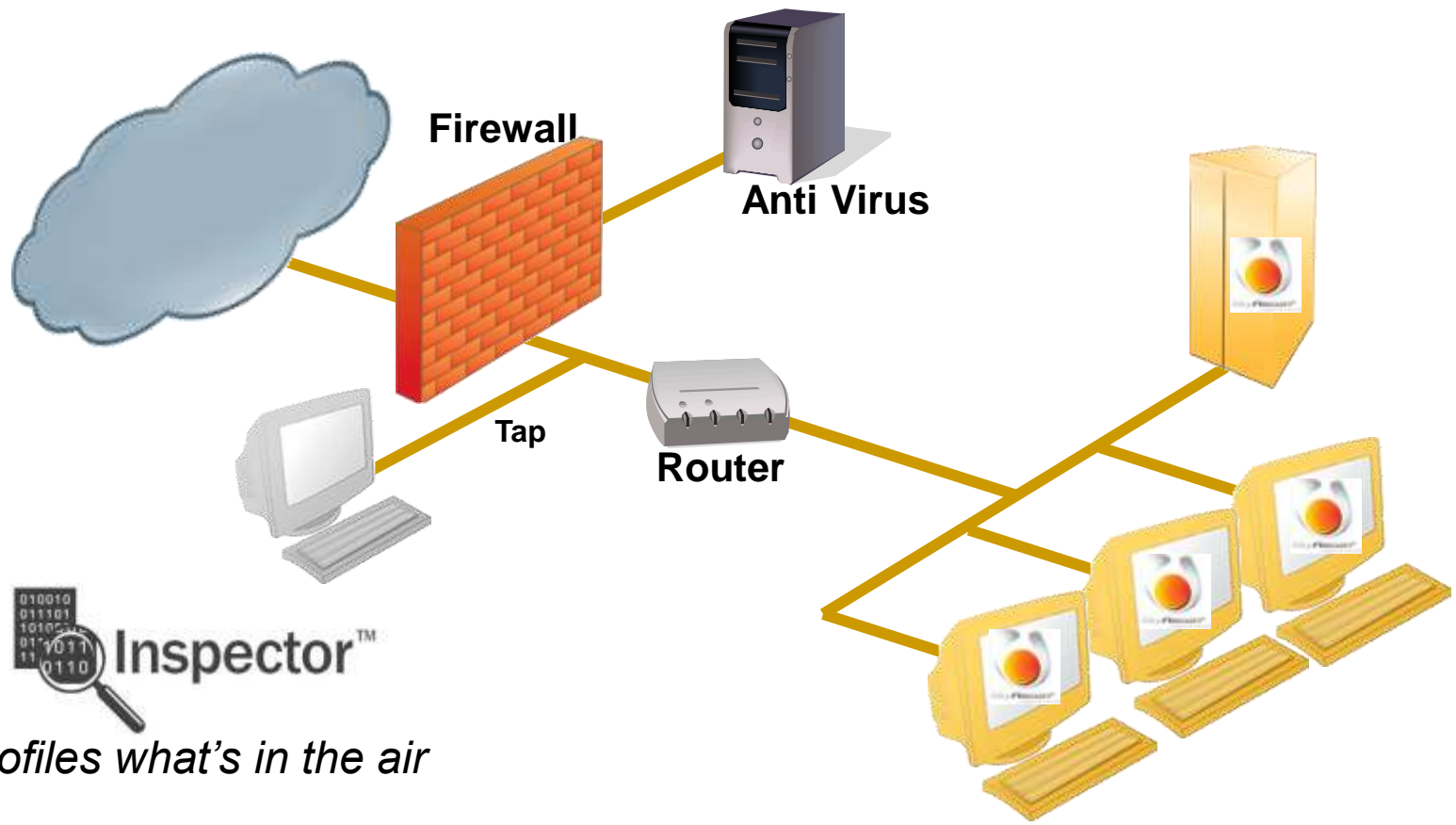
# Controlling the 'Planes On The Ground'



*SkyRecon*<sup>®</sup>  
Intelligent *Client* Security

**STORMSHIELD**<sup>®</sup>  
SECURITY SUITE

## All-in-one 7Mb Endpoint Solution

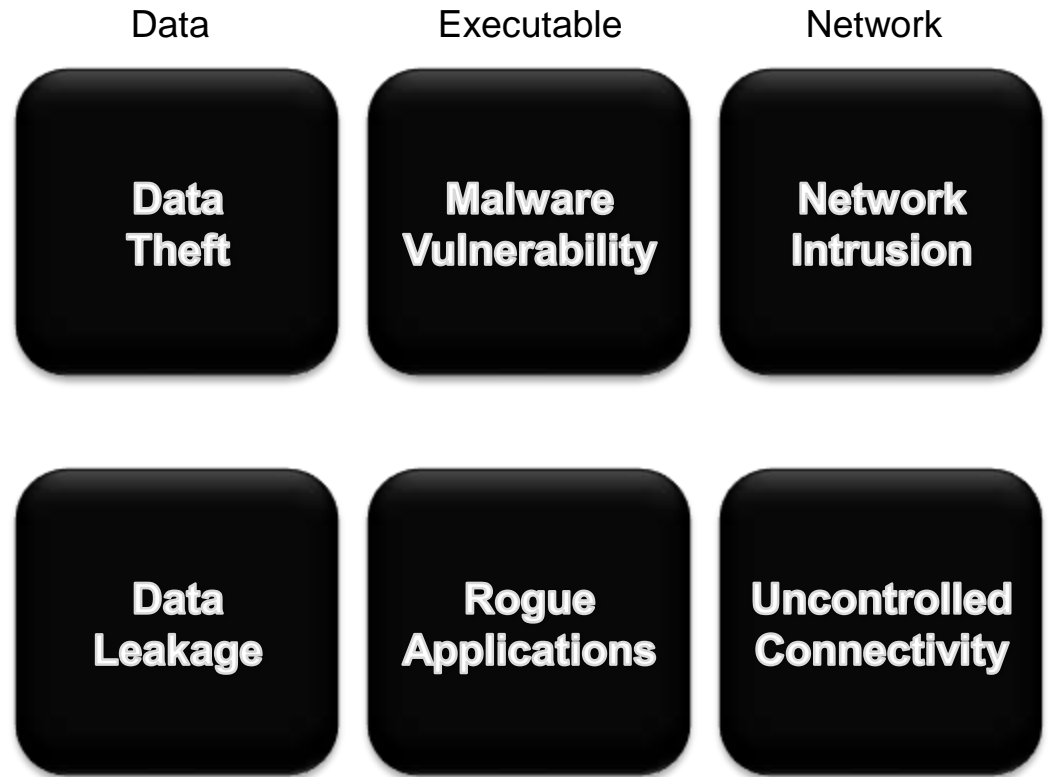


# STORMSHIELD<sup>®</sup>

SECURITY SUITE

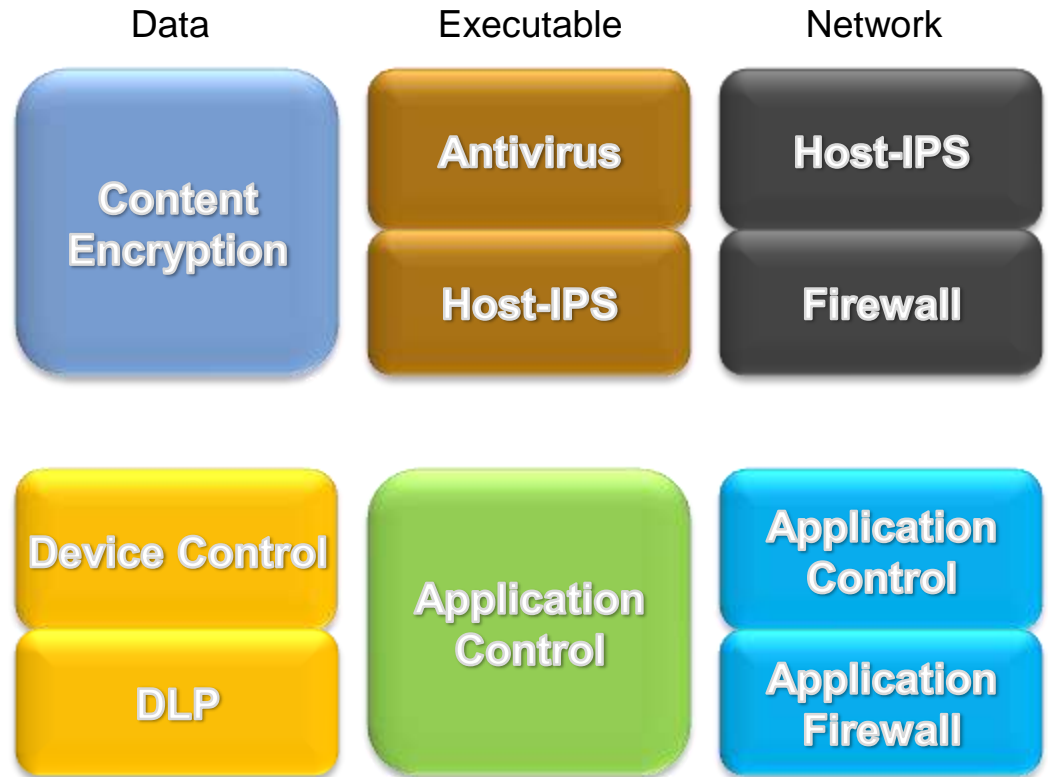
*Controls what's on the ground*

# Categorical Endpoint Risks



# Typical Vendor Response

- MULTIPLE AGENTS**  
 deployment & management nightmare, unacceptable resource requirements
- DISJOINTED FEATURES**  
 technologies work in silos, system and data still exposed to threats
- INCOMPLETE POLICIES**  
 difficult to achieve internal policy, let alone prove regulatory compliance

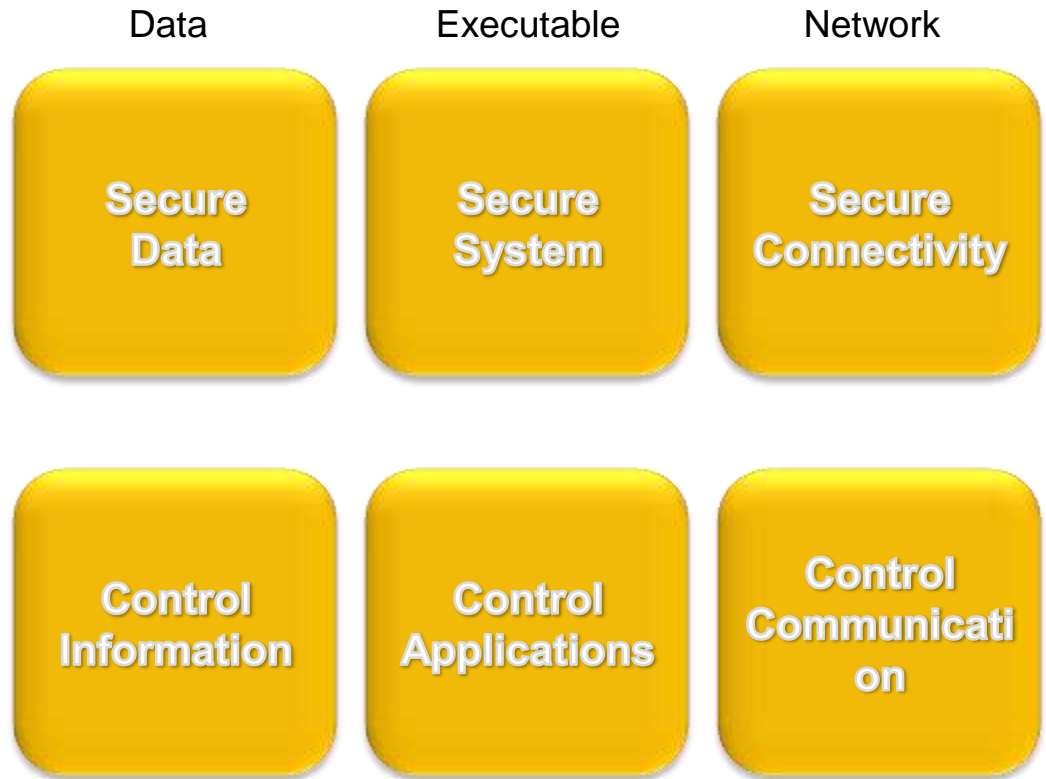


# Key Security Requirements

- Single, lightweight agent
- Protection layers work together
- Dynamic policy enforcement
- Centralized, role-based console

Enterprise-level reporting

Regulatory/compliance



# SkyRecon StormShield Features



- Host-IPS and Firewall
- Application Control
- Network Access Control
- Wireless Security
- Device Control
- Content Encryption
- Anti-virus Anti-spyware

### System Protection

- Behavioral Security
- Intrusion Prevention
- Stateful Firewall
- Application Control
- Wireless Security

### Data Protection

- Device Control
- File Access Control
- Content Encryption
- Device Encryption
- Keylogging Prevention

### Enforceable Policy

- Integrated Management
- Dynamic Policies
- NAC Policies
- Monitoring & Reporting
- Compliance Auditing

# SkyRecon StormShield Benefits



-  Host-IPS and Firewall
-  Application Control
-  Network Access Control
-  Wireless Security
-  Device Control
-  Content Encryption
-  Anti-virus Anti-spyware

### Business Operations

- 24 x 7 availability
- Asset protection
- Regulatory requirements
- Enables new applications
- Brand protection

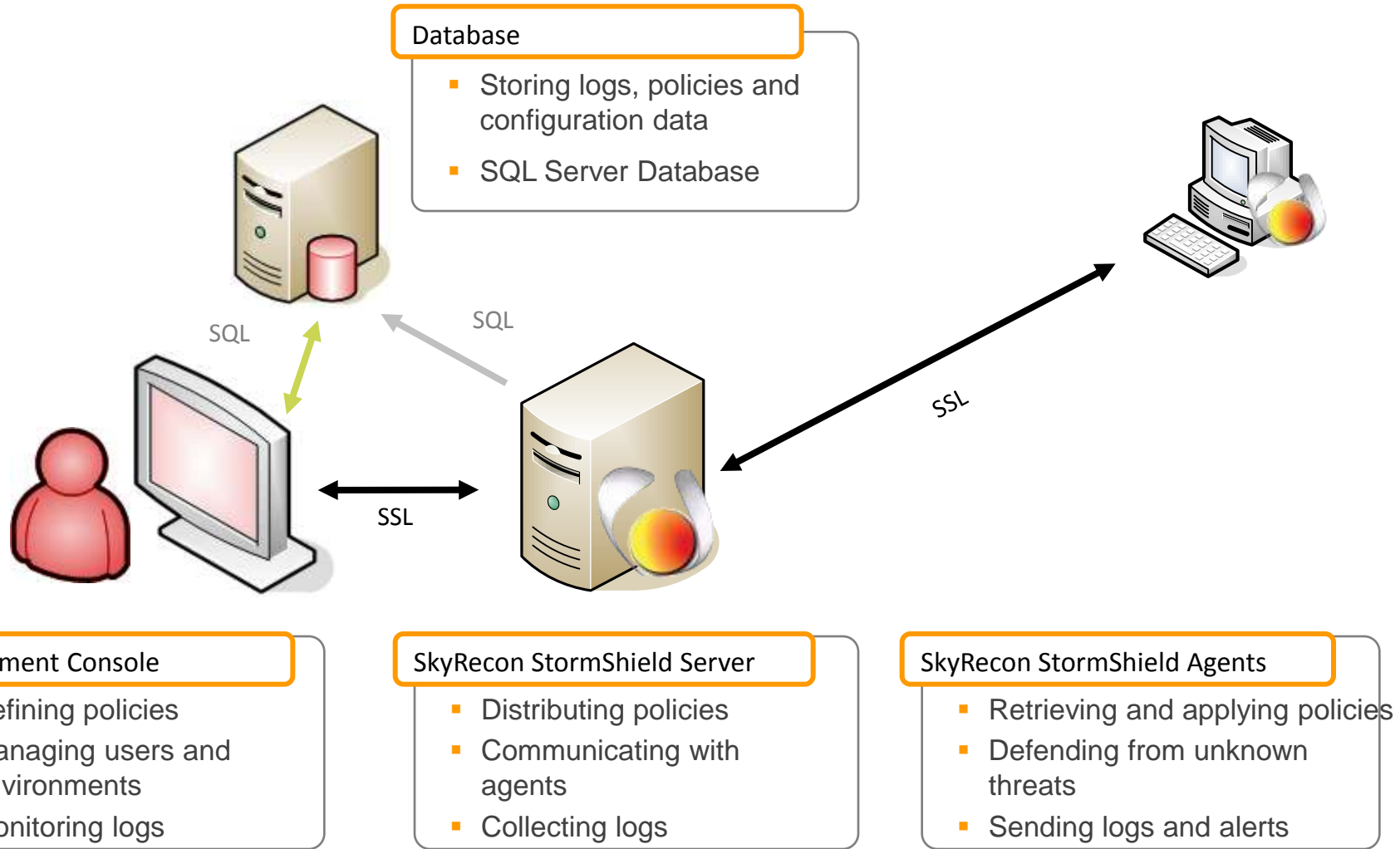
### IT Operations

- Eliminate panic-patching
- Single endpoint solution: vendor, product, support
- Integration with IT infrastructure (NMS, AD/GPO, SSL/VPN)

### Security Operations

- Integrated system and data protection
- Centralized management, auditing, reporting
- SIEM integration

# SkyRecon StormShield Components





## DataConnectors Show Special NQA Offer Number 1

- We will provide a free Network Quality Assurance Assessment
- Includes free use of Congruity Inspector™ Software, 1 week operational profile (software & license activation key)
  - 1 Gb memory stick with Congruity Inspector evaluation software
  - Installation & Set-up assistance
  - One hour on-line engineering review of results
  - Customer keeps archive, compliance reports & software
- Interested parties must schedule the install today for next week on their internal network & review findings after the one week data collection to be eligible for the free Network Quality Assurance Assessment
- Up to a \$10,000+ dollar value depending on the number of endpoints



## DataConnectors Show Special NQA Offer Number 2

- We will provide a free 30 day evaluation of SkyRecon StormShield
- Includes free use of StormShield in your evaluation or production environment for up to 30 days
- This offer includes:
  - 1 Gb Memory Stick with SkyRecon StormShield evaluation software
  - Remote Installation & Set-up assistance
  - One hour of on-line engineering review of results
  - Interested parties must schedule the install today

For more information on



or



Contact:

JCS & Associates, Inc.

Phone 800-968-9527

E-Mail: [info@jcsinc.com](mailto:info@jcsinc.com)

Web Site: <http://www.jcsinc.com>