



Welcome to the Baltimore Tech-Security Conference



JCS & Associates, Inc. (JCS) was founded in 1991 as an I/T Security Sales and Marketing Company specializing in Endpoint Security Solutions.

JCS was McAfee's leading VAR in 1992 in NA and 1993 worldwide.

JCS began reselling Reflex Disknet Pro in 1995, and was named the exclusive North American Distributor by Reflex in 2002.

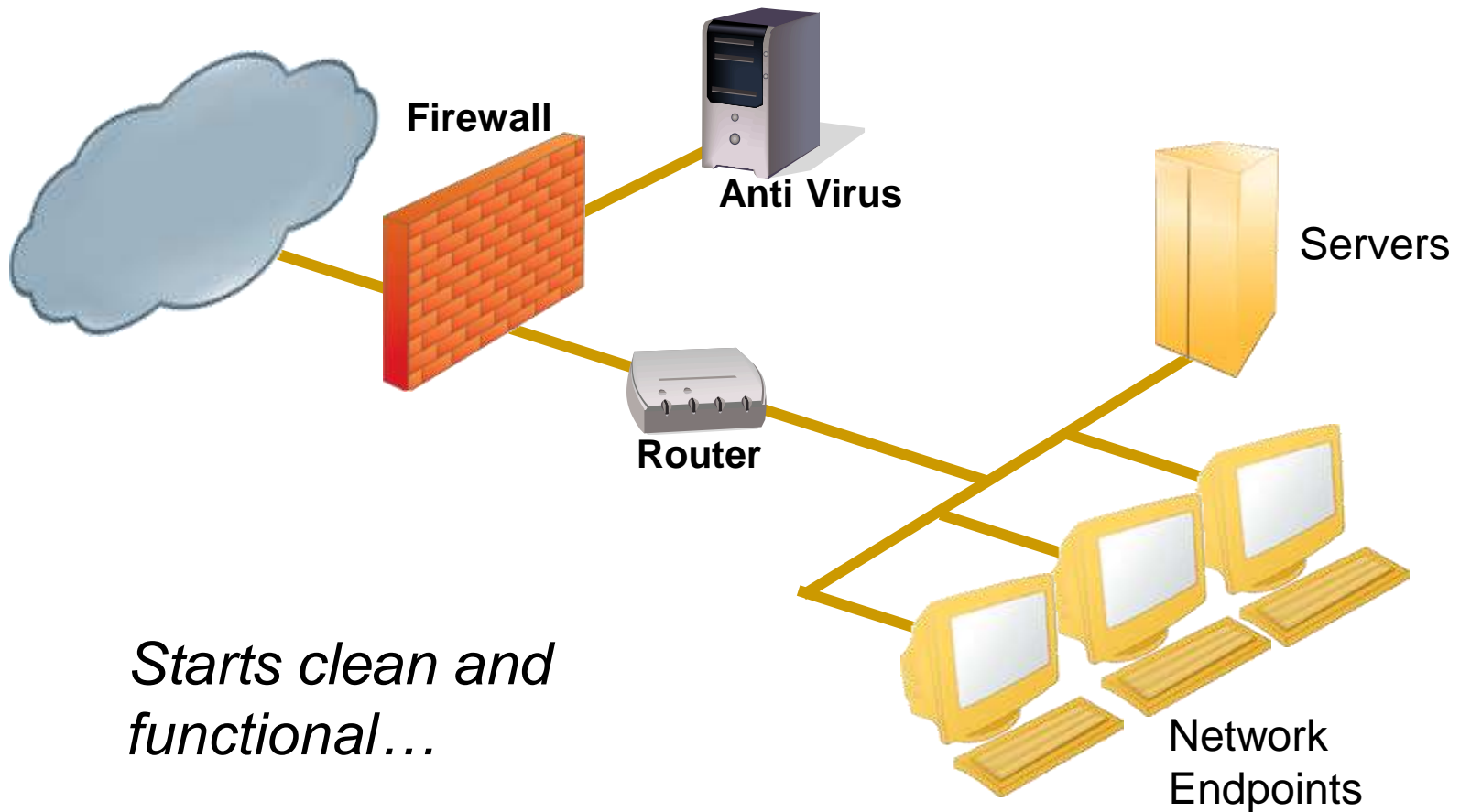
Reflex Magnetics was acquired by Pointsec in November of 2006. Pointsec was acquired by Check Point in February of 2007, and JCS was named "Check Point Endpoint Security Partner of the Year" for 2007 in March of 2008.

JCS currently has customers in every state and province in North America and offices located in Ann Arbor and Grand Rapids, MI, Minneapolis, MN, Sioux Falls, SD, Boulder, CO and Ottawa, Canada.

JCS has sold, installed and integrated more desktops with end-point security solutions than any other individual VAR in North America.

JCS' expertise helps customers accelerate the evaluation, proof of concept, executive buy-in cycle and installation for agent and non-agent based end-point security solutions.

A typical corporate network is deployed clean and functional and is designed to enable users to perform their day-to-day job tasks in a secure, compliant and productive manner to fulfill the company's business objectives.

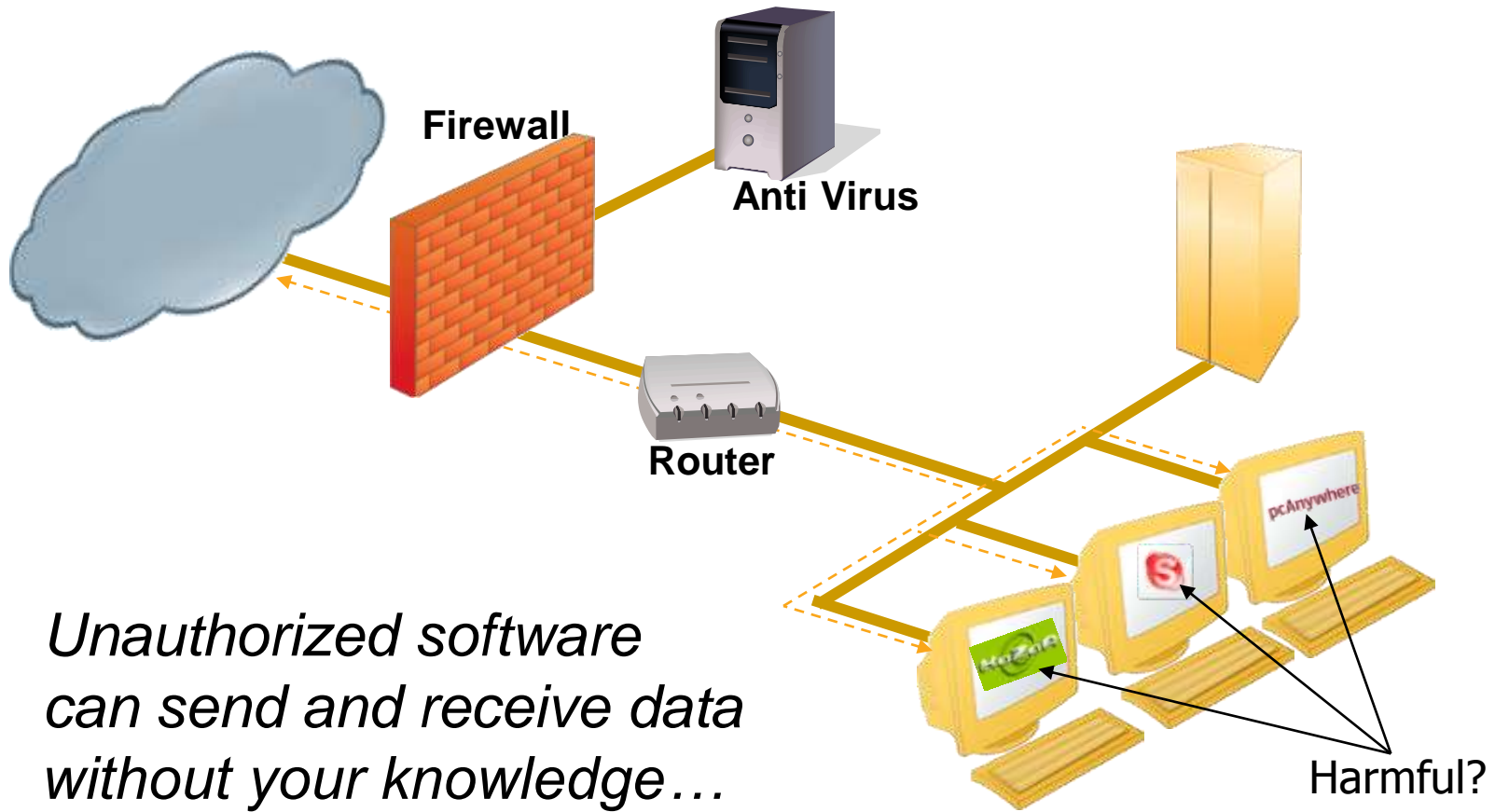


Starts clean and functional...

In time, through normal network usage, quality degrades from on-line activity, errors, software & file downloads, bandwidth contention, communications and Web use.

These activities may or may not be part of normal operations...

But can you even identify them?



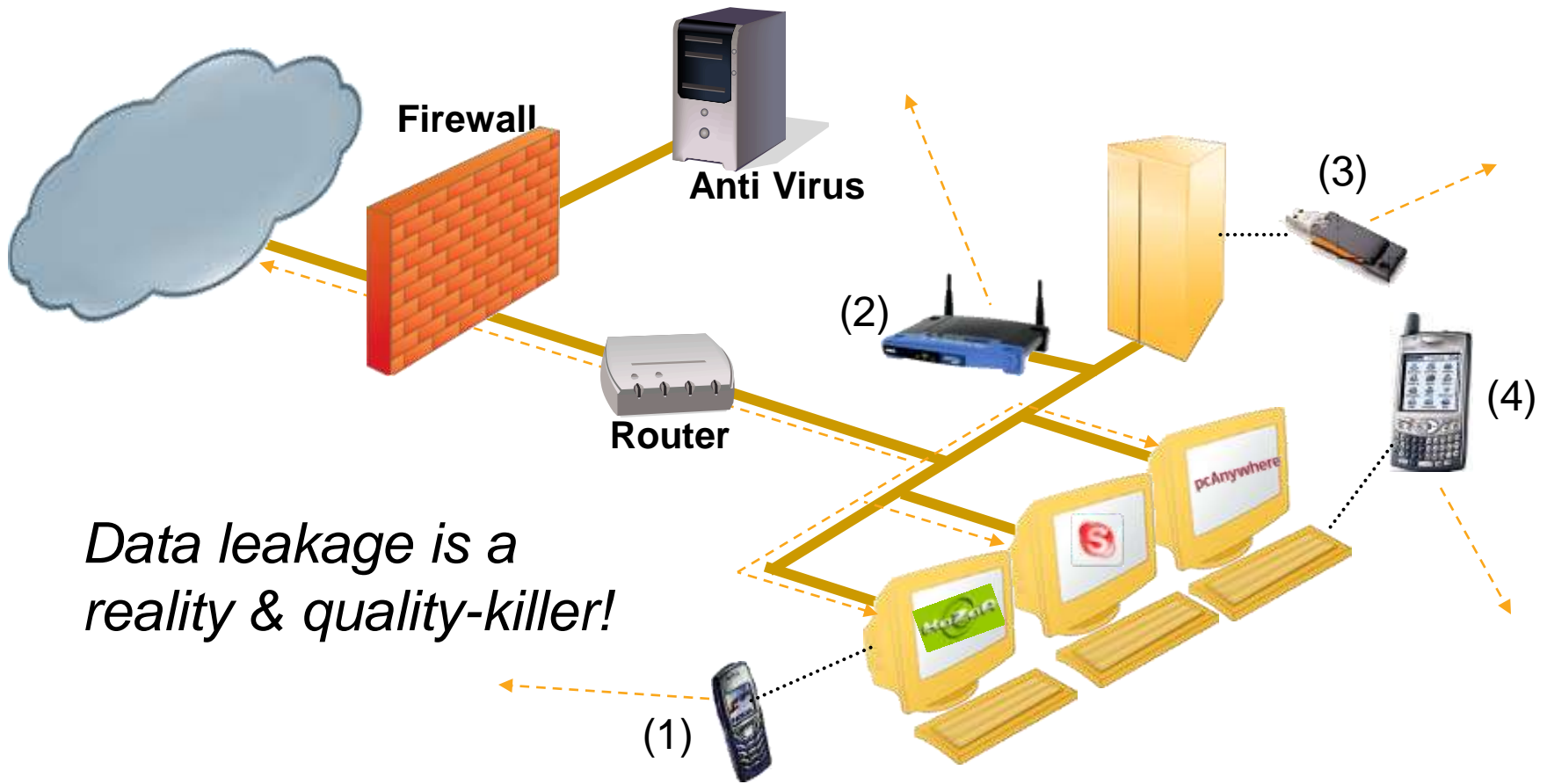
*Unauthorized software
can send and receive data
without your knowledge...*

Now, add into the mix all the quality-killing variables from other sources.

Examples:

- mobile device acting as a modem
- a rogue wireless access point
- wireless PDA transmission
- USB removable storage devices

Do have any idea where, how or why your IT resources are being used???



Data leakage is a reality & quality-killer!

(1) a mobile device as a modem, (2) rogue wireless access point, (3) USB removable storage devices, or (4) wireless PDA transmission.

So...what can you do?

- How do you verify the quality of network systems, controls, policies and business use in a simple and cost effective manner?
- How do you manage IT quality and security policy on every endpoint without installing client or agent software?

Does your organization have a policy addressing:

- Peer to Peer networking across the internet
- Web Sharing (sendthisfile.com)
- IM (Instant Messaging) like AIM, Skype MSN
- Casual Personal Web use (what % of an employee's work day)
- Inappropriate content (hate mail porn obscene text)
- File & Software Downloading (exe or unrestricted)
- Internet Radio
- Personal email, personal email for sending corporate information or communications
- Windows Updates (optional or mandated)
- Bandwidth utilization (business vs. personal usage)

If your organization has a policy, what processes do you use to verify:

Peer to Peer networking across the internet

Web Sharing (sendthisfile.com)

IM (Instant Messaging) like AIM, Skype MSN

Casual Personal Web use (what % of an employee's work day)

Inappropriate content (hate mail porn obscene text)

File & Software Downloading (exe or unrestricted)

Internet Radio

Personal email, personal email for sending corporate information or communications

Windows Updates (optional or mandated)

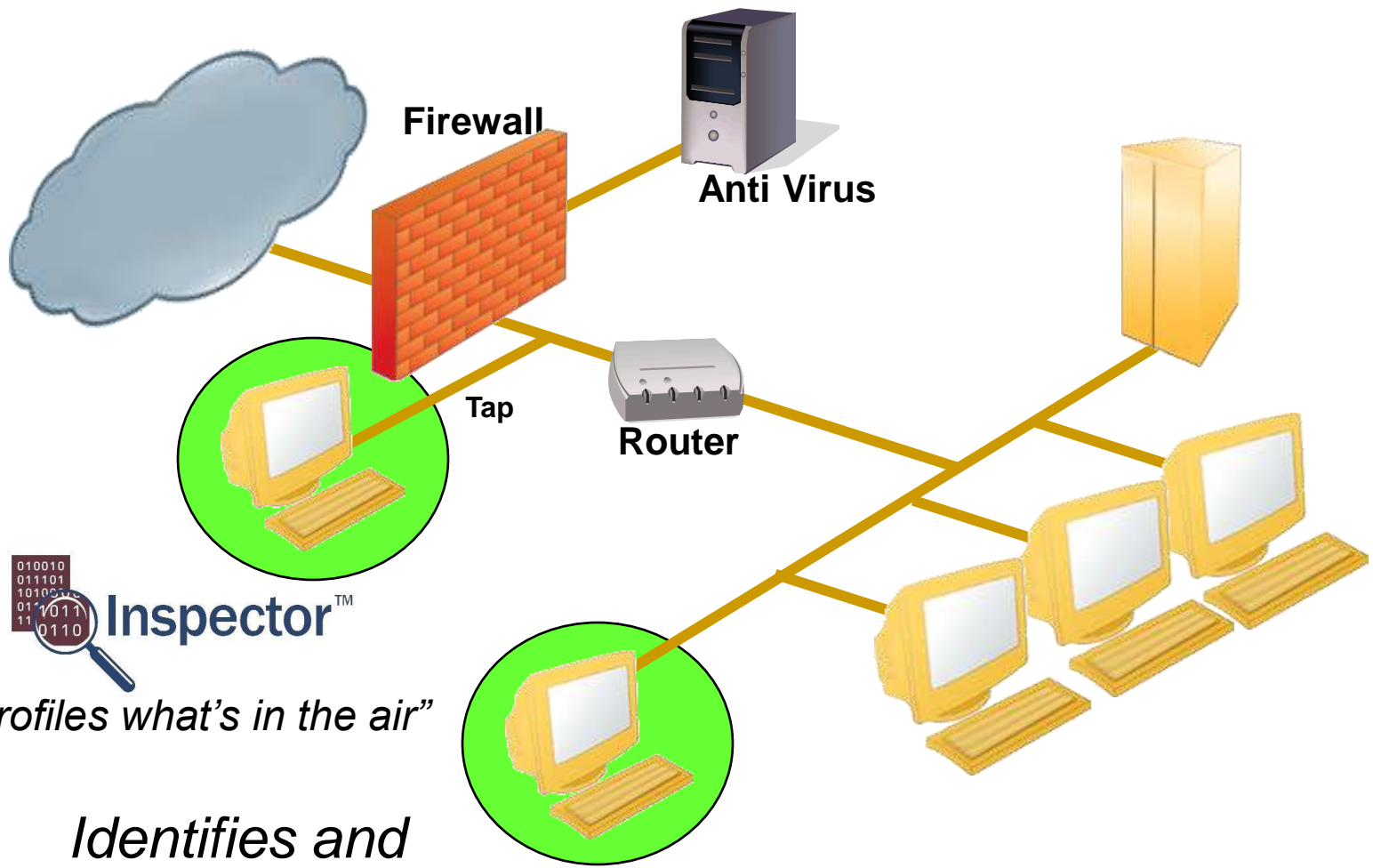
Bandwidth utilization (business vs. personal usage)

Enter *Congruity Inspector™* (comprehensive Network Quality Assurance solution),



and *Spectator Professional* (Clientless Endpoint Security Management - CESM)

SPECTATOR™
PROFESSIONAL



010010
011101
101001
011011
11

Inspector™

“Profiles what’s in the air”

*Identifies and
corrects your
problems...*

**SPECTATOR™
PROFESSIONAL**

“Profiles what’s on the ground”

010010
011101
101001
011101
11



Inspector™

JCS

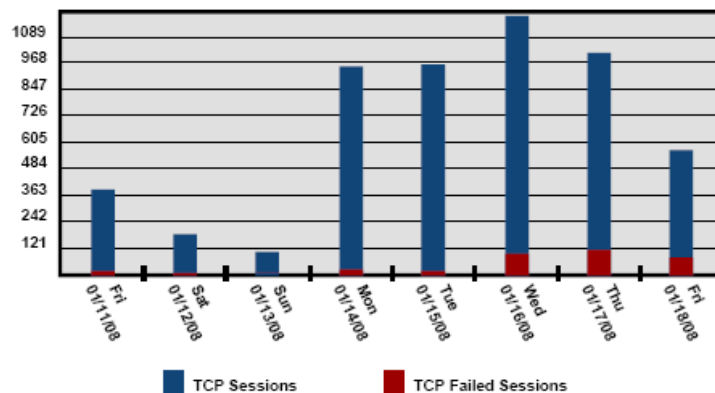
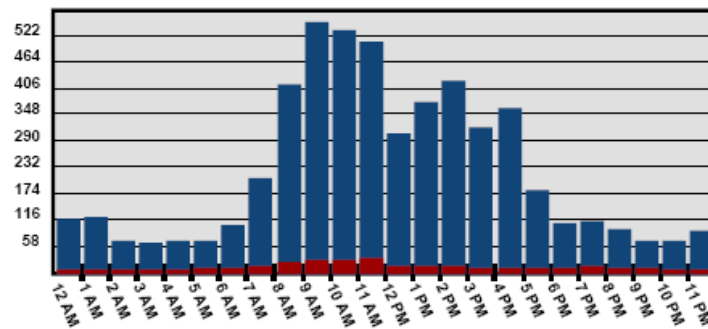
& Associates, Inc.



Congruity Inspector™

- Easy, single PC install provides network-wide IT status, not disruptive
- Automated network-level data source eliminates manual device log collection, reporting and review
- Consistent unbiased NQA, IT best practice status verification for: Firewall, IDS, Hosts, Email, policy compliance and technology usage
- Empirical 7x24 cycle depicts operational trends and relationships so users can easily verify QA standards, quickly identify the source of issues & prioritize actions

SMTP Access Times



Email System Usage Trends



Congruity Inspector

- Improves IT Management, budgeting & planning
- Easy, consistent results
- Automation Reduces costs
- One-click compliance reports
- Improves productivity
- Improves audit preparation
- Improves Outside Audit Results
- Zero FTE use & operation
- Improves communications

Congruity Technologies Know the Network™

Threat Inspector®

Threat Hosts Services Time

Internet-Exposed TCP/IP Services 6/22/2007 - 6/29/2007

This summary represents the **inbound network security policy**.

Top: Max

Service	Port	ID	TCP/IP		Bytes	
			Sessions	Failed	Inbound	Outbound
smtp	25	EMAIL	13201	0	762.11 MB	31.00 MB
ms-sql-s	1433		14218	0	193.39 MB	154.16 MB
vytalvaultbrtp	2546		12	0	134.15 MB	3.82 MB
dmdocbroker	1489	FTP_data	1	0	35.36 MB	34.34 MB
t128-gateway	1627	FTP_data	1	0	35.18 MB	34.17 MB
sdsc-lm	1537	FTP_data	1	0	34.94 MB	33.95 MB
https	443	SSLv3	1942	2	30.55 MB	24.07 MB
	3202		469	0	22.91 MB	21.08 MB
	3204		466	0	22.13 MB	20.33 MB
	3203		472	0	21.26 MB	19.44 MB
	3561	FTP_data	1	0	7.95 MB	7.78 MB
	3571	FTP_data	1	0	7.90 MB	7.73 MB
cnap	1637	FTP_data	2	0	4.27 MB	4.14 MB
laplink	1547	FTP_data	1	0	4.18 MB	4.06 MB
netmap_lm	1493	FTP_data	1	0	4.16 MB	4.04 MB
docstor	1488	FTP_data	1	0	3.79 MB	3.68 MB
ampr-inter	1536	FTP_data	1	0	3.51 MB	3.41 MB
shockwave	1626	FTP_data	2	0	2.90 MB	2.82 MB
https	443		181	0	1.06 MB	863.23 KB
http	80	HTTP	784	0	828.90 KB	390.21 KB

Spectator Professional

- 100% Clientless Endpoint Security & System Management
- Centralized network-wide management from a single PC
- Profiles entire network in just minutes with total accuracy
- Configurable base-line alarms for black lists, image deviations, registry deviations, missing services, processes, applications & user-defined items
- Automated device/system monitoring and control features
- Fast right-click remediation reduces helpdesk calls & troubleshooting time
- Scans for unauthorized items: USB, P2P, modems, split tunnels, etc.
- Full graphical results with integrated Crystal Reports
- OPSEC certified and integrates with Tivoli



Spectator Professional has an easy-to-use GUI with automated remediation & management capabilities.

The screenshot displays the Spectator Professional interface. On the left, a window titled 'Adding Hosts for Inspection' shows a list of hosts to be inspected, with a callout box labeled 'LIST OF HOSTS TO BE INSPECTED'. The main area features a tree view of system components like 'Anti Virus (35)', 'Service Packs (18)', and 'Files (163)', with a callout box labeled 'POLICY COMPLIANCE TABS'. At the bottom, a table displays 'INSPECTION RESULTS' with columns for Host Name, IP Address, Last Logged-On User, Object, Status, and Details. A callout box labeled 'REMEDIATION ACTIONS' is positioned over the bottom right of the table, showing options like 'Show Running Processes', 'Uninstall Application', and 'Send Message'.

Host Name	IP Address	Last Logged-On User	Object	Status	Details
XPPROSP2	192.168.0.102	XPPROSP2\Owner	Elvish	Installed	
XPPROSP2	192.168.0.102	XPPROSP2\Owner	Windows Messenger	Installed	Evidence for this item was found. How
XPPROSP2	192.168.0.102	XPPROSP2\Owner	GoToMeeting	Installed	Evidence for this item was found, but
XPPROSP2	192.168.0.102	XPPROSP2\Owner	Virtual Network Computing	Installed	Evidence for this item was found, but
XPPROSP2	192.168.0.102	XPPROSP2\Owner	More Than One Network Card	Installed	Active: Broadcom 440x 10/100 Integr
XPPROSP2	192.168.0.102	XPPROSP2\Owner	More Than One Network Card	Installed	Active: Dell Wireless 1370 WLAN Mini
XPPROSP2	192.168.0.102	XPPROSP2\Owner	Service Pack 2	Installed	Kingston DataTraveler II USB Device
XPPROSP2	192.168.0.102	XPPROSP2\Owner	Podcast022706.mp3	Exists	Service Pack 2 (Evidence for this item
XPPROSP2	192.168.0.102	XPPROSP2\Owner	HigherValue1.mp3	Exists	Podcast022706.mp3
XPPROSP2	192.168.0.102	XPPROSP2\Owner	pes101.mp3	Exists	HigherValue1.mp3
XPPROSP2	192.168.0.102	XPPROSP2\Owner	pes102.mp3	Exists	pes101.mp3
XPPROSP2	192.168.0.102	XPPROSP2\Owner	best.avi	Exists	pes102.mp3
XPPROSP2	192.168.0.102	XPPROSP2\Owner	network.GIF	Exists	best.avi
XPPROSP2	192.168.0.102	XPPROSP2\Owner	sig.jpg	Exists	network.GIF
XPPROSP2	192.168.0.102	XPPROSP2\Owner	ipic	Exists	sig.jpg

Spectator Professional provides easy to understand reports

Spectator Professional
Promisec Spectator Professional Inventory report

Chatting

ALM	Name	IpAddress	OS	MacAddress	ObjectName
	HADM	192.168.13.5	5.1	00-50-BA-04-BB-D8	ALM
	BLACK-LIST1	192.168.14.2	5.1	00-0C-29-72-30-01	ALM

Google Talk

Name	IpAddress	OS	MacAddress	ObjectName
BLACK-LIST1	192.168.14.2	5.1	00-0C-29-72-30-01	Google Talk

ICQ

Name	IpAddress	OS	MacAddress	ObjectName
AVI	192.168.13.13	5.1	00-13-20-11-1C-D8	ICQ
YOSSEI	192.168.13.3	5.1	00-18-F3-50-3F-09	ICQ
RANI	192.168.15.10	5.1	00-0C-29-85-67-44	ICQ
BLACK-LIST1	192.168.14.2	5.1	00-0C-29-72-30-01	ICQ

ICQ Lite

Name	IpAddress	OS	MacAddress	ObjectName
AVI	192.168.13.13	5.1	00-13-20-11-1C-D8	ICQ Lite
YOSSEI	192.168.13.3	5.1	00-18-F3-50-3F-09	ICQ Lite
RANI	192.168.15.10	5.1	00-0C-29-85-67-44	ICQ Lite
BLACK-LIST1	192.168.14.2	5.1	00-0C-29-72-30-01	ICQ Lite

Microsoft Comic Chat

Name	IpAddress	OS	MacAddress	ObjectName
BLACK-LIST1	192.168.14.2	5.1	00-0C-29-72-30-01	Microsoft Com

Miranda

Name	IpAddress	OS	MacAddress	ObjectName
BLACK-LIST1	192.168.14.2	5.1	00-0C-29-72-30-01	Miranda

Promisec Spectator Professional

Spectator Professional

Top Hosts

Report data:

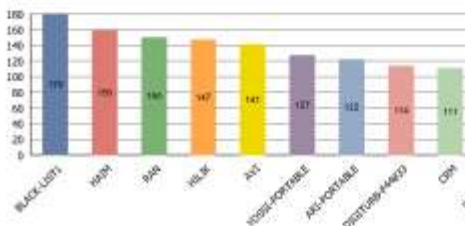
Report date: 1/14/2008

Total number of hosts: 513

Hosts inspected: 23

No response: 19

Unknown hosts: 442



Host name: BLACK-LIST1

Total Objects: 179

IP Address: 192.168.14.9

MAC Address:

OS type: Microsoft Windows XP

Last user: PROMISEC-DOMAIN\hain

■ Removable Media ■ Chatting ■ Process

Spectator Professional 12/15/2007

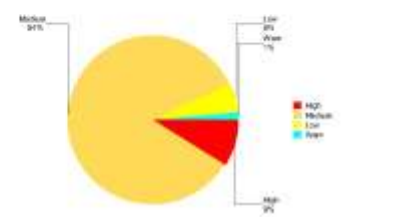
Compliance report

Total number of hosts inspected: 49

Report Score based on number: 433

Score Broken down by alert:

Severity level	Number of alerts
High (4)	13
Medium (3)	121
Low (2)	8
Warning (1)	2



Alerts broken down by host

Host alert count

Host Category	Alert Count
BLACK-LIST1	179
YOSSEI/PORTABLE	121
RAN	147
YOSSEI/PORTABLE	127
Total	433
AVI	147
HADM	161
HBLK	147
RANI	147
YOSSEI/PORTABLE	121

	High	Medium	Low	Warn	Total
PROMISEC-DC 192.168.13.101	0	0	1	0	1
LIAT 192.168.13.4	0	1	4	0	5
AVI 192.168.13.13	2	3	3	0	8

DataConnectors Show Special NQA Offer

- We will provide a free Network Quality Assurance Assessment
- Includes free use of Congruity Inspector™ Software, 1 week operational profile (software & license activation key)
 - Installation & Set-up assistance
 - One hour on-line engineering review of results
 - Customer keeps archive, compliance reports & unlicensed software
- Interested parties must schedule the install today for next week on their internal network & review findings after the one week data collection to be eligible for the free Network Quality Assurance Assessment
- Up to a \$10,000+ dollar value depending on the number of endpoints

For more information on



Inspector[™] or



Contact:

JCS & Associates, Inc.

Phone 800-968-9527

E-Mail: info@jcsinc.com

Web Site: <http://www.jcsinc.com>