



Check Point
SOFTWARE TECHNOLOGIES LTD.

Virtual Security Services, Real Savings: Eliminating Appliance Sprawl

Neil Henry, Product Marketing Manager,
Check Point

20 February 2008

puresecurity

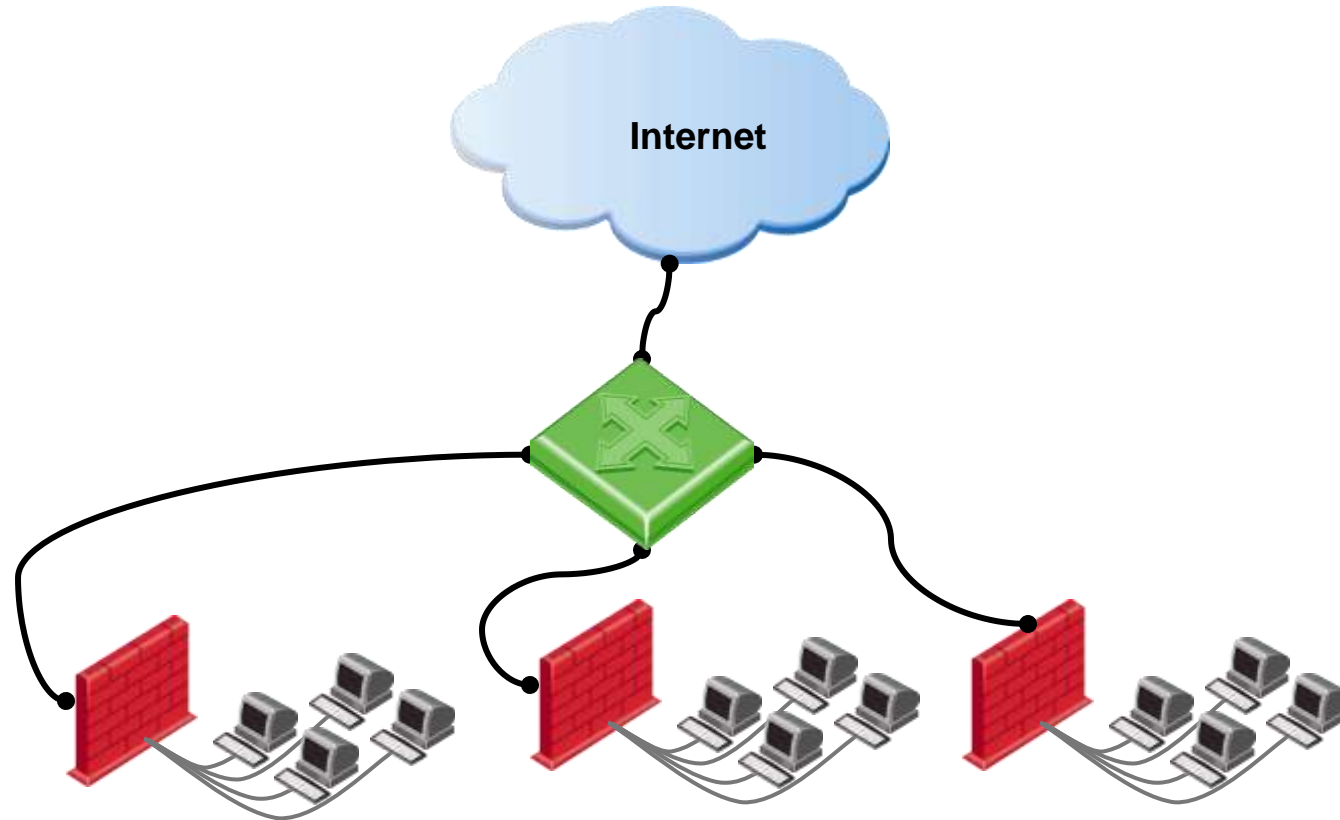
The Perfect Storm

Gen Area	Drivers	Sub-drivers
High Pressure	Domain/DMZ proliferation	Proliferation of services per domain
	Proliferation of attacks	Content-oriented
	Moore's Law	Multi-core processors
Scarce Resources	People	
	Space	
	Power	
Stricter Constraints	Business continuity	Five-nines
	Low latency	VoIP
	Resource SLAs	Bandwidth, processing
	Capacity	2-3x overbuilds

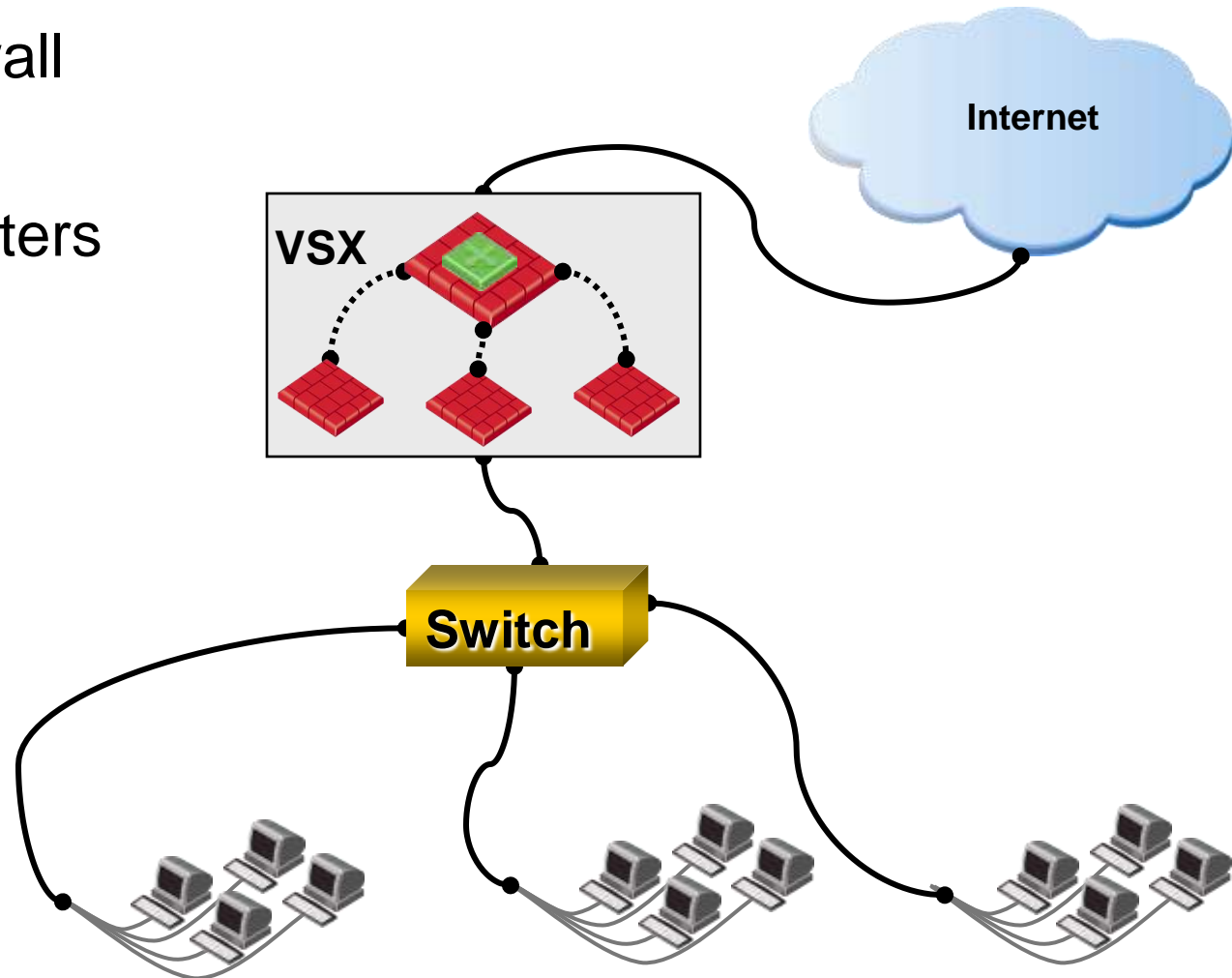
	Consequences
Capital	Multiplication of standard equipment for each domain or DMZ
	Addition of <u>new</u> appliance layers
	Inflexible architecture
SLA's	Increased vulnerability
	Hard to manage policy sets
	Poor performance
Data Center	No resource protection
	Blown power budgets
	Blown space budgets
	Not five-nines

Requirement	Why
1. Domain, equipment consolidation	Flexibility, power, space, etc
2. Per-domain management	Ease pressure on HQ teams
3. Add new services per domain	Mitigate new threats, protect new services
4. Domain separation at all levels	CIA (confidentiality, integrity, availability)
5. Per-domain resource management	Prevent theft of service
5. High performance	Capacity
6. High availability	Business continuity, five-nines

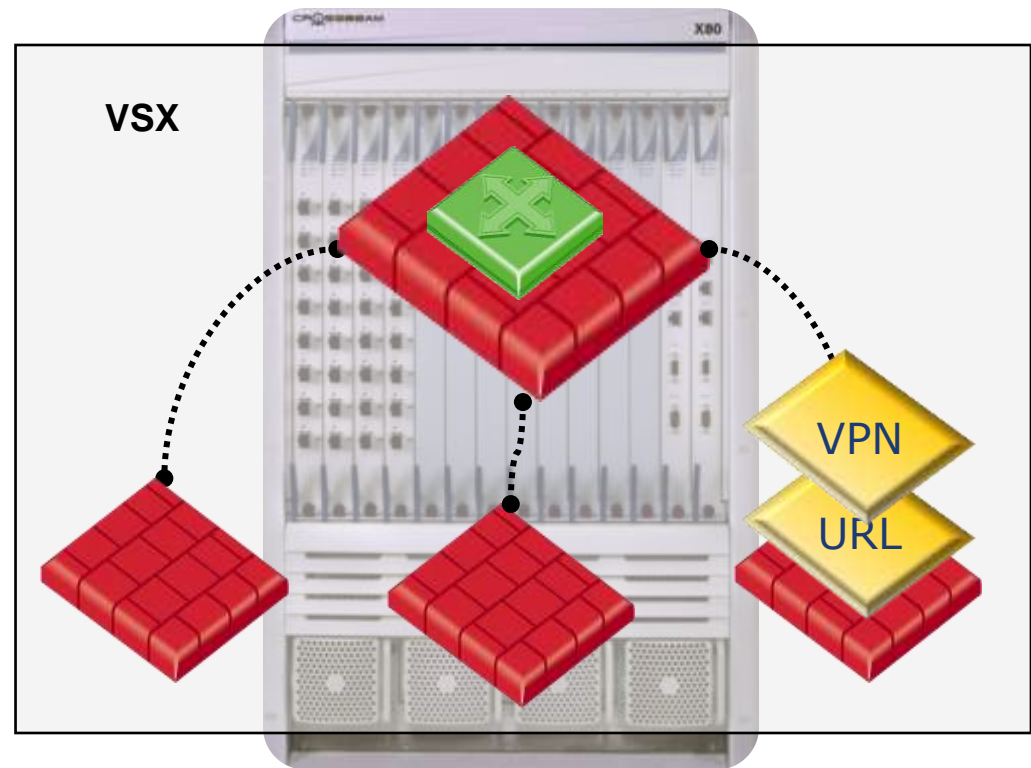
Traditional Security Deployment



- Virtual Firewall
- IP-VPN
- Hosting Centers



- Firewall
- IPS
- Content Filters
- SSL VPN
- Resource management
- Layer 2 operation





Unified Security Architecture for Data Centers

Security

*Virtualized and
dedicated
application aware
firewalls*

Management

*Centralized, domain
specific
management*

Event Correlation

*Real-time and
historical event
identification and
analysis*

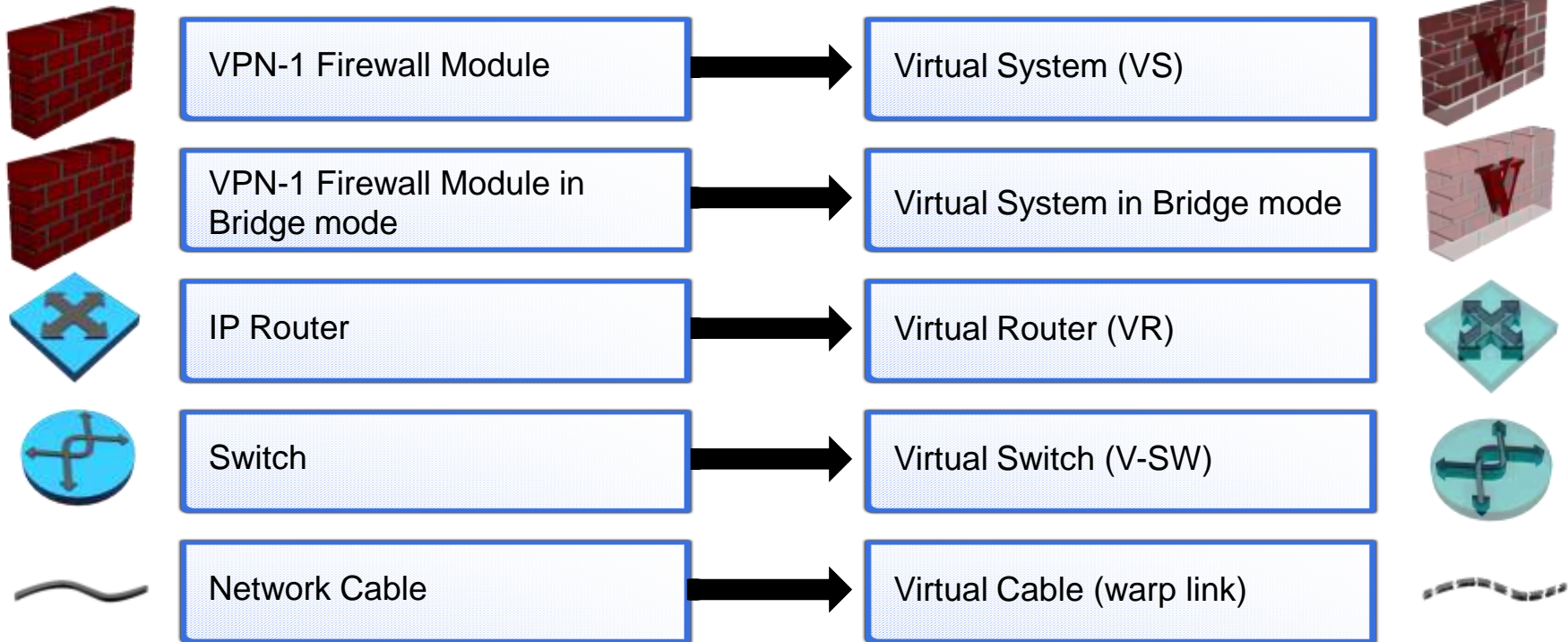


What is VSX?

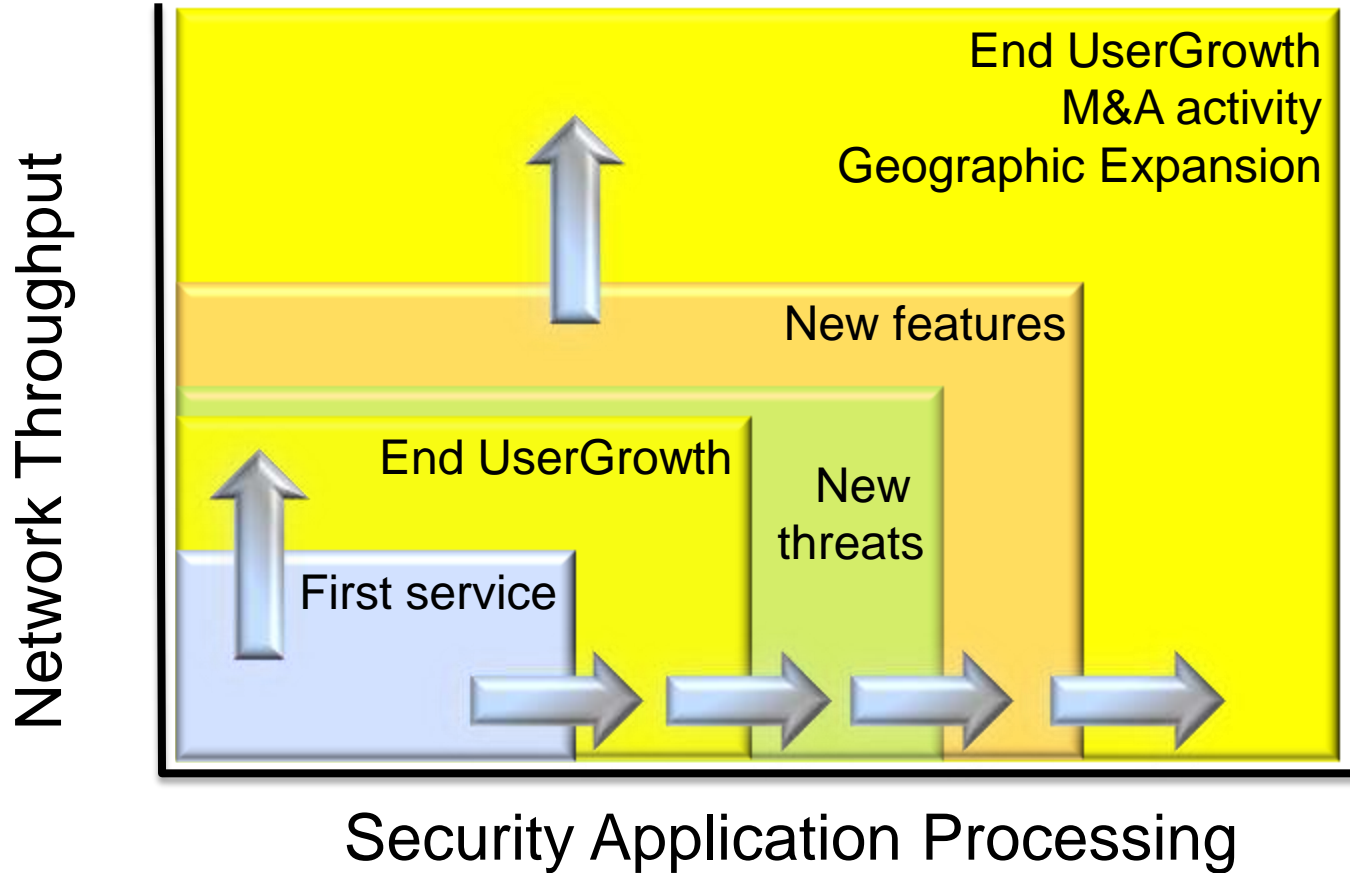
- A VSX is a Gateway running several separate firewalls each protecting a different network (customer)
 - Firewall, VPN, RAS, IPS, CF
- Packets arriving to a VSX gateway are routed to the relevant firewall based on incoming interface, source or destination IP Address

Physical

Virtual



Performance Scaling for Content Security



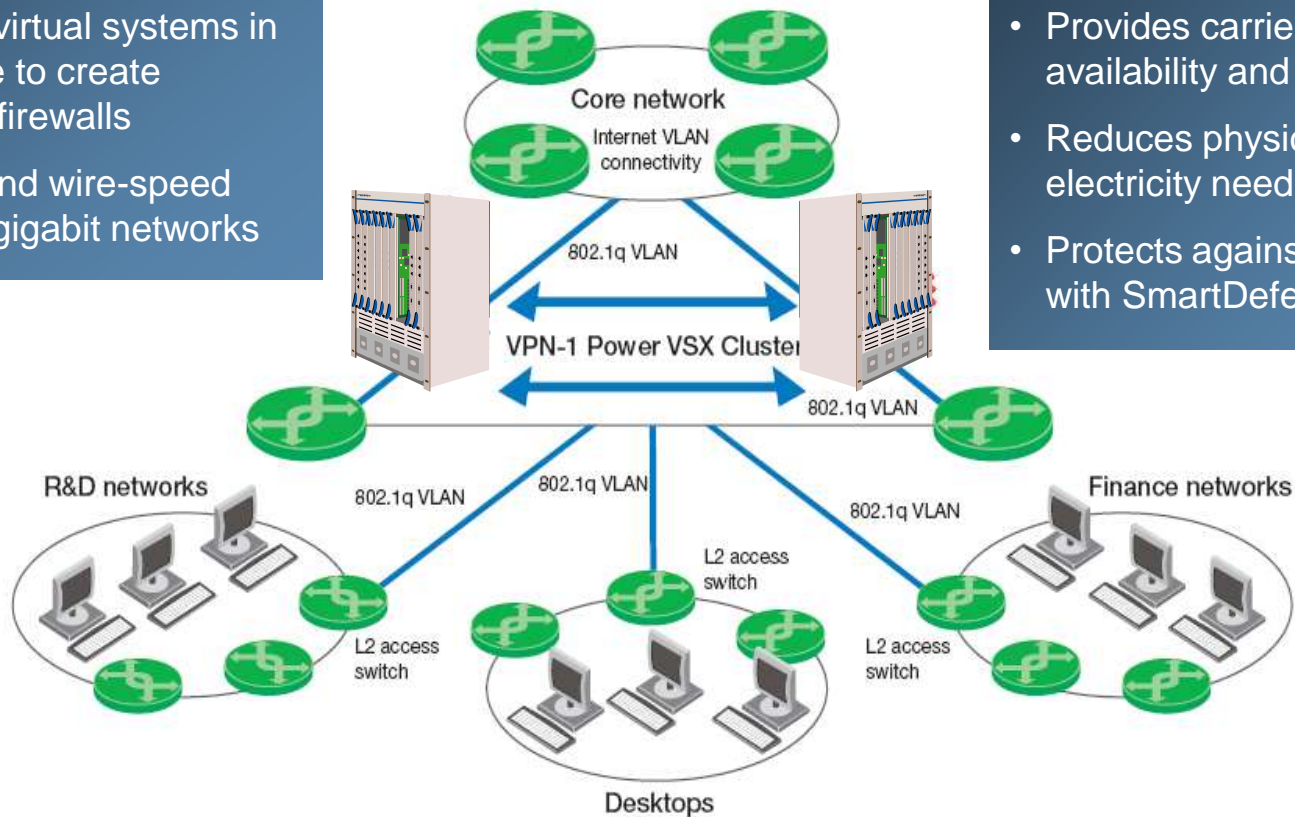
Features

- Virtualized firewall, VPN, intrusion prevention
- Virtualized network environment
- Support for virtual systems in bridge mode to create transparent firewalls
- Clustering and wire-speed security for gigabit networks

Benefits

- Minimizes hardware investment
- Improves provisioning efficiency
- Provides carrier-class availability and scalability
- Reduces physical space and electricity needs
- Protects against new threats with SmartDefense

VPN-1 Power VSX



Benefits

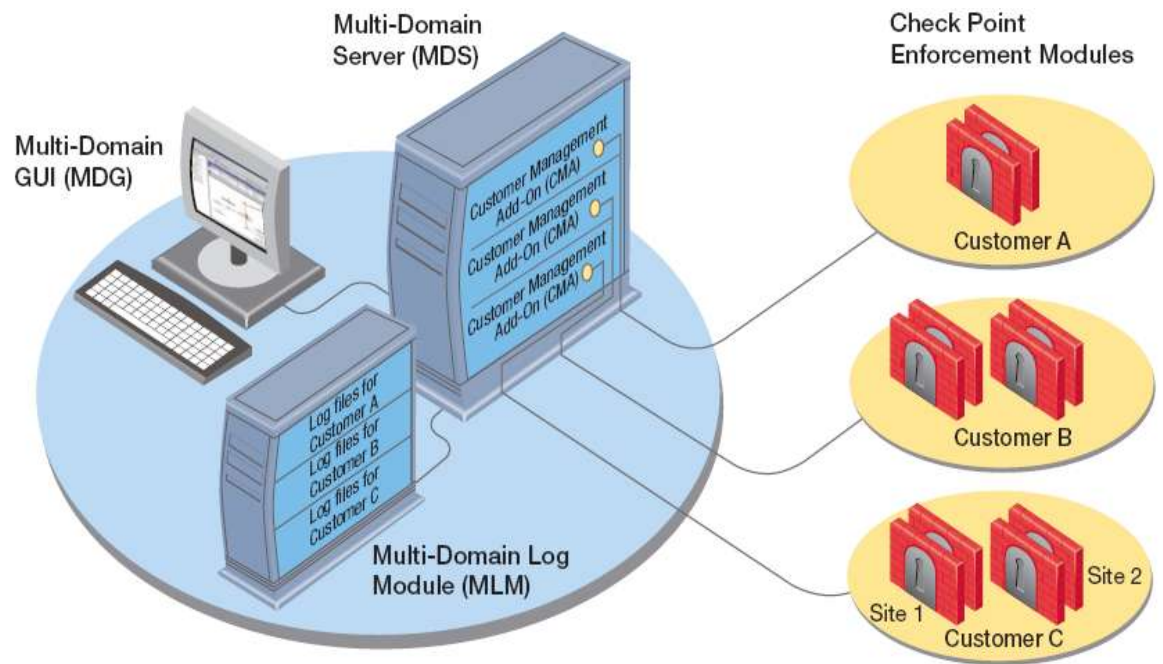
Provider-1

Centralized security management for large enterprises

- Simplified security policy provisioning
- Reduced administrative overhead and capital investment
- Deeper insight into enterprise security
- Full visibility over the entire security environment

Features

- Multi-domain, multi-policy management
- Central network and security management
- Granular, role-based administration
- Management high availability



Multinational Healthcare Consultancy

European Presence

- Consolidated data centers regionally
- Global management via Provider-1
- Dedicated VPN-1 Power and VSX gateways
- SSL remote access



Regional Voice and Data Service Provider

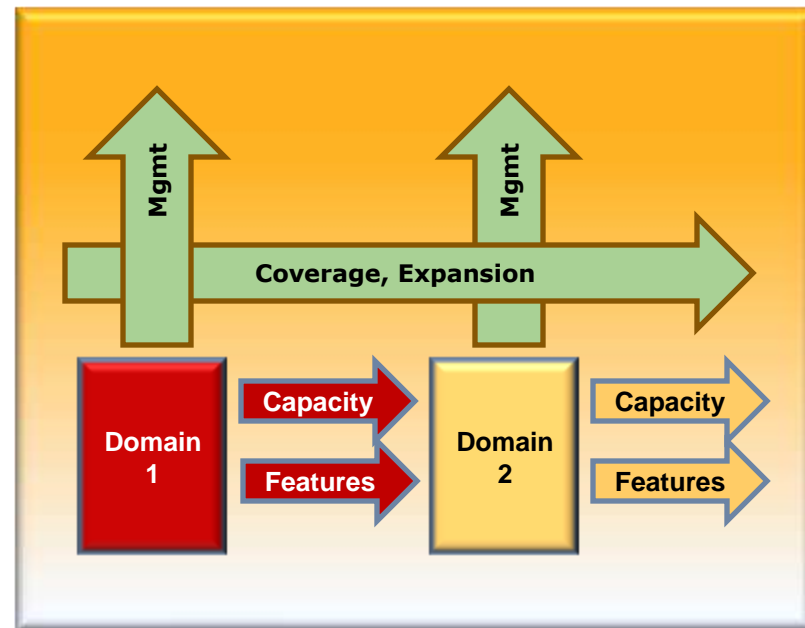
Southeastern USA

- VSX as hosted security service platform
- Provider-1 for customer service management
- Last mile to customer facility, with firewall in the data center



Challenge

- Multi-dimension, cost-effective scaling for:
 - Complete coverage
 - » Expansion of features
 - Business growth
 - » Organic growth (traffic, services, users)
 - » M&A growth (organizations)
 - Management
 - » Central and distributed management



URL Filtering for:

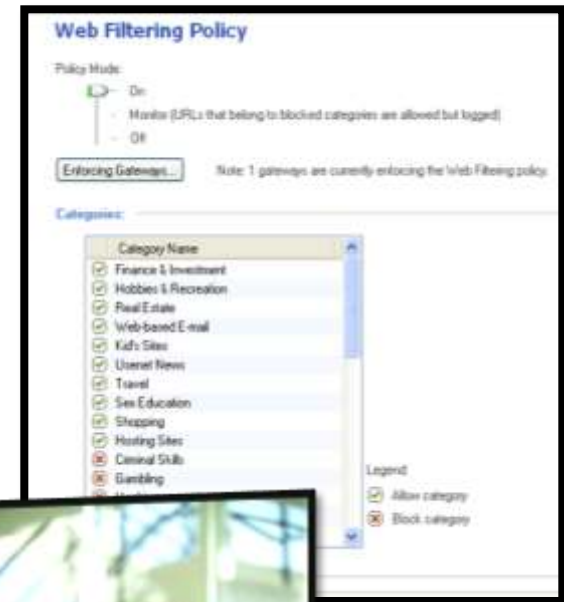
- Appropriate Use in business environments
- K-12 & public access safety

- Enables central service for secure access to the Internet
- Activated per VS

SSL Client Remote Access:

- Enables network level connectivity
- Unified authentication and administration

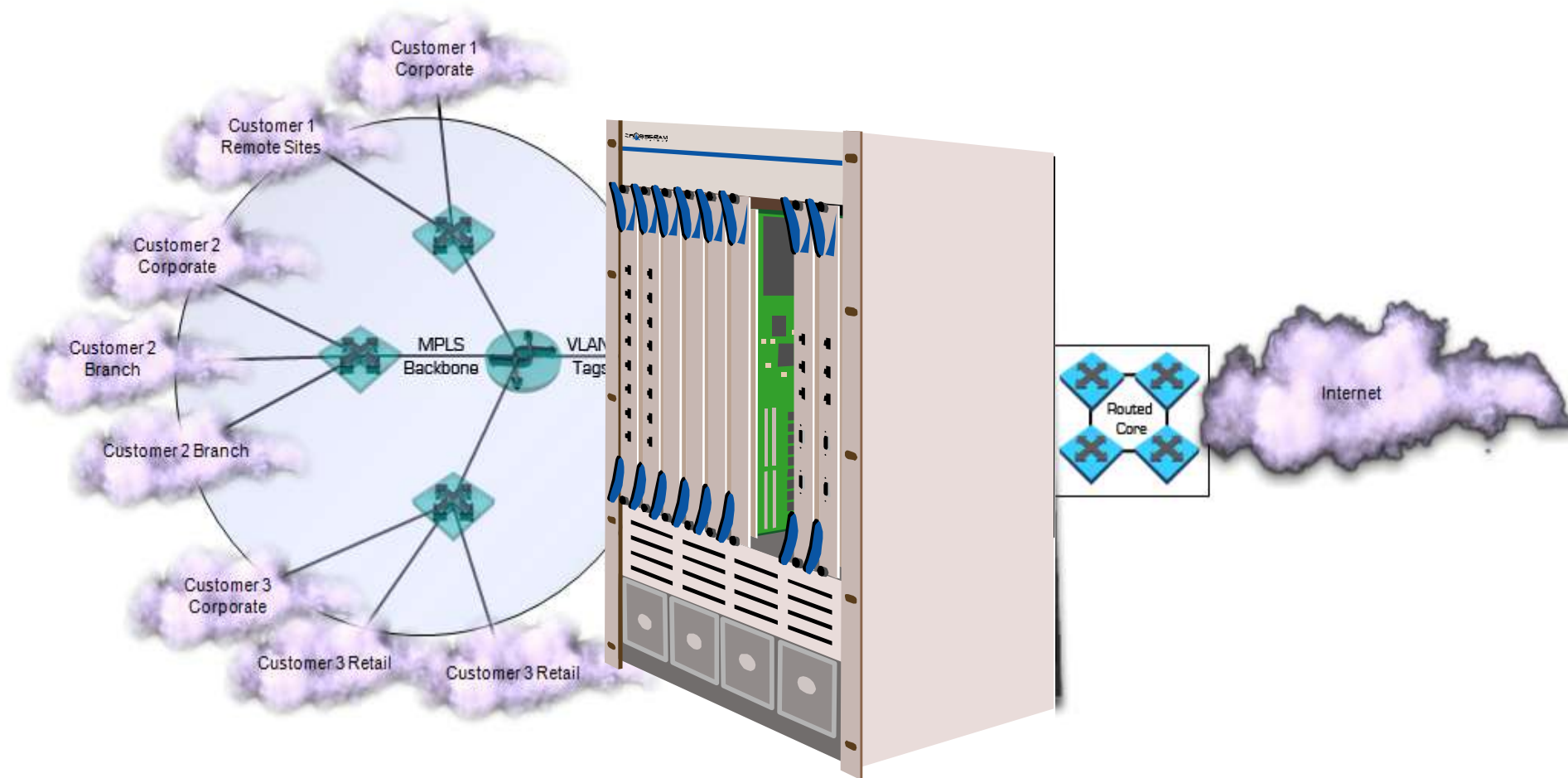
- Enables providing remote access to SSL users
- Reduced remote access licensing and administration



End-to-End Virtualized Enterprise Security



VSX in a Managed Service Environment



Questions?

■ The CrossBeam X-Series System

A single network device with:

- Best-of-Breed Security
- Total solution components
- High performance
- Massive scalability
- High availability
- Total policy control
- Distributed management

Equal High
Quality

Coverage
Growth

Operationally
Cost-effective

